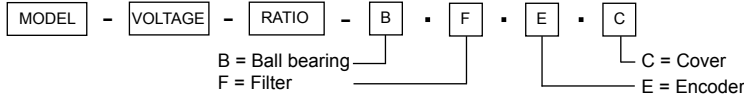


PD3046 GEARED MOTOR SERIES 12 AND 24V TYPE

Brush commutator planetary dc gear motors with strong metal gears of straight type manufactured by milling machine process. Only the motor shaft gear pinion is made of bakelite for noise reduction purpose. The output shaft is made in hardened stainless steel and has a ball bearing output as standard. This is marked as a B in the part description. For electric noise suppression the dc motors have as standard and if available integral filters as either with varistor and / or capacitor. This is marked as a F in the part description. There are options for encoder assembly and special adaptations. All motors are produced under strict high quality production standards and are tested and inspected prior to delivery.

MODEL NO. DESIGNATIONS



Example: PD3046-12-14-BFEC

GEAR HEAD DATA

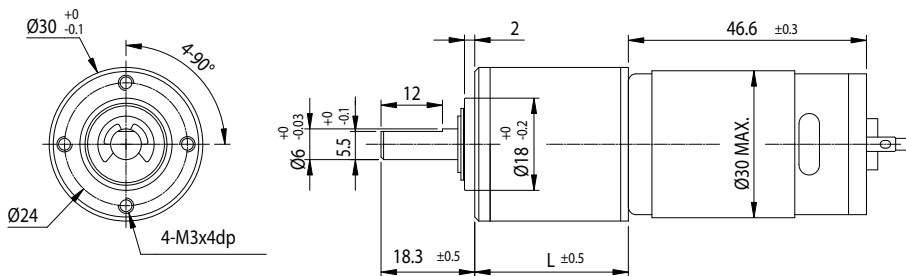
- Ball bearing
- Planetary gear
- Backlash at no load $\leq 2.5^\circ$
- Radial (10mm from flange) load $\leq 3.5\text{kg}$
- Axial load $\leq 2.5\text{kg}$
- Press fit max. $\leq 10\text{kg}$
- Radial play $\leq 0.04\text{mm}$
- Thrust play $\leq 0.3\text{mm}$



GEARED MOTOR DATA - 24V

Reduction	5:1	14:1	19:1	27:1	39:1	51:1	71:1	100:1	139:1	189:1	264:1	516:1	721:1	939:1
Reduction absolute	5 2/11	13 212/289	19 38/187	26 103/121	34 43/44	50 4397/4913	71 5273/179	99 1044/2057	139 184/1331	188 51013/83521	263 39370/54043	515 14254/22627	720 14481/14641	939 975/5324
Number of stages	1	2	2	2	2	3	3	3	3	4	4	4	4	4
Rated torque (kg-cm)	0.54	1.2	1.7	2.4	3.1	4.0	5.5	7.8	8	10	10	10	10	10
Rated speed (rpm)	1170	445	320	229	176	121	87	62	46	34.5	26	13.5	9.8	7.3
Length L1 (mm)	23.6	30	30	30	30	36.4	36.4	36.4	36.4	42.8	42.8	42.8	42.8	42.8
Weight (g)	188	201	201	201	201	216	216	216	216	231	231	231	231	231

APPEARANCE SIZE



MOTOR FEATURES

- Precious metal brush commutator dc motors
- Gears in steel manufactured by milling process
- Ball bearing supported gear shaft if (B)
- Integrated electric noise suppression filter if (F)
- Custom adaptations are possible
- Encoder version is available
- Operating temp. range -10...+60 °C

MOTOR DATA

Rated volt (V)	Rated torque (g-cm)	Rated speed (rpm)	Rated Current (mA)	No load speed (rpm)	No load current (mA)	Rated output (W)
12	110	5950	≤ 900	7300	≤ 150	7.0
24	130	6160	≤ 500	7300	≤ 80	8.5

