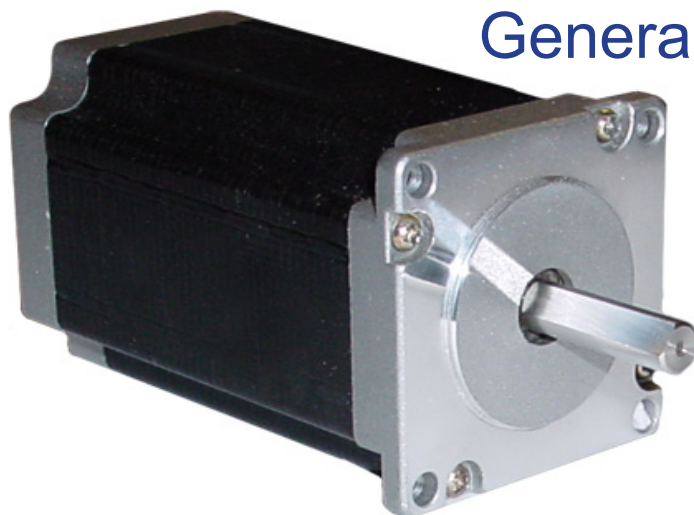


Stepping motors hybrid types
General catalogue



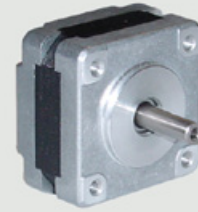
SH35 SERIES STEPPING MOTORS

Stepping motors hybrid type following the NEMA size standard. The motors are in standard available with winding for bipolar drive and in step angles 1.8 degrees. Both shaft sides with ball bearings. All motors can be tailored to meet different requirements of winding, mechanical configurations and electric interface.

MOTOR SPECIFICATIONS

- Step angle Accuracy 1.8° ±5% full step no load
- Resistance Accuracy ±10%
- Inductance Accuracy ±20%
- Temperature Rise 80°C Max. (rated current, 2 phase on)
- Ambient Temperature -20°C ~ +50°C
- Insulation Resistance 100Mohm Min, 500VDC
- Dielectric Strength 500VAC for one minute
- Shaft Radial Play 0.02Max.(450 g-load)
- Shaft Axial Play 0.08Max.(450 g-load)
- Max radial force 28N at 20 mm from the flange
- Customization is welcome

SH3526-18-028



SH3528-18-050



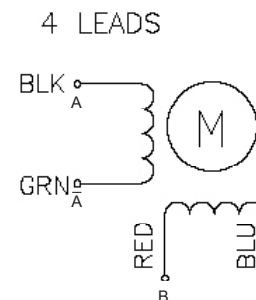
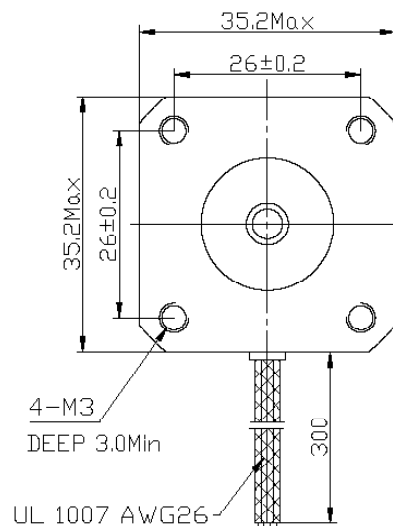
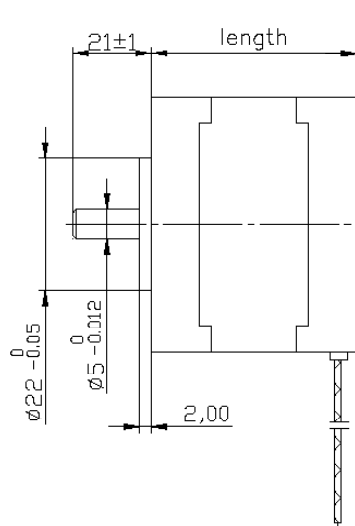
SH3536-18-100

TRANSMOTEC SWEDEN AB

STEPPING MOTOR DATA

MODEL	STEP ANGLE	VOLTAGE	CURRENT	RESISTANCE	INDUCTANCE	HOLDING TORQUE	DETENT TORQUE	ROTOR INTERIA	WEIGHT	LENGHT
		V	A	OHM	mH	g-cm	g-cm	g-cm ²	Kg	mm
SH3526-18-028	1.8°	7.4	0.28	26	27	700	60	10	0.13	26
SH3528-18-050	1.8°	10	0.5	20	14	1000	80	11	0.14	28
SH3536-18-100	1.8°	2.7	1.0	2.7	4.3	1400	100	14	0.18	36

APPEARANCE SIZE



SWITCHING SEQUENCE

STEP	A	B	A	B
1	+	+	-	-
2	-	+	+	-
3	-	-	+	+
4	+	-	-	+

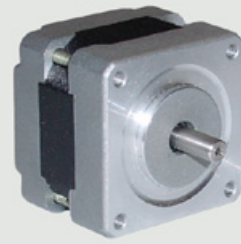
SH42 SERIES STEPPING MOTORS

Stepping motors hybrid type following the NEMA size standard. The motors are in standard available with winding for bipolar drive and in step angles 1.8 degrees. Both shaft sides with ball bearings. All motors can be tailored to meet different requirements of winding, mechanical configurations and electric interface.

MOTOR SPECIFICATIONS

- Step angle Accuracy 1.8° ±5% full step no load
- Resistance Accuracy ±10%
- Inductance Accuracy ±20%
- Temperature Rise 80°C Max. (rated current, 2 phase on)
- Ambient Temperature -20°C ~ +50°C
- Insulation Resistance 100Mohm Min, 500VDC
- Dielectric Strength 500VAC for one minute
- Shaft Radial Play 0.02Max.(450 g-load)
- Shaft Axial Play 0.08Max.(450 g-load)
- Max radial force 28N at 20 mm from the flange
- Max. axial force 10 N
- Customization is welcome

SH4225-18-040



OTHER SIZES STEPPING MOTORS



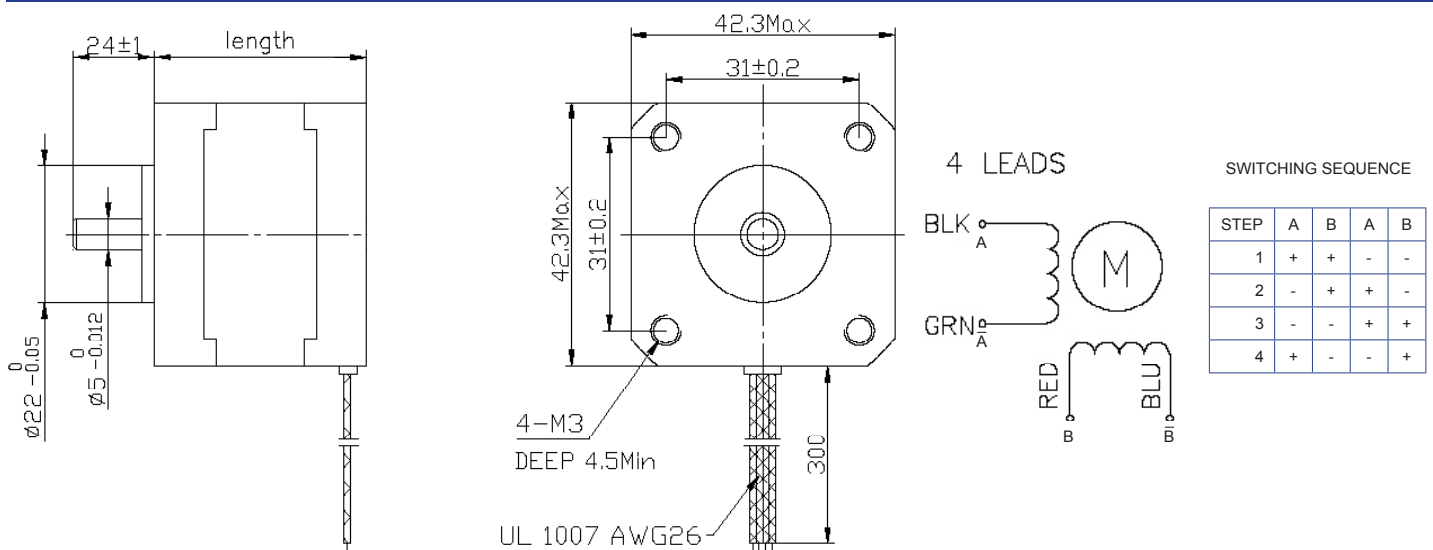
SH4234-18-133

SH4248-18-168

STEPPING MOTOR DATA

MODEL	STEP ANGLE	VOLTAGE	CURRENT	RESISTANCE	INDUCTANCE	HOLDING TORQUE	DETENT TORQUE	ROTOR INERTIA	WEIGHT	LENGTH
		V	A	OHM	mH	Kg-cm	g-cm	g-cm ²	Kg	mm
SH4225-18-040	1.8°	9.6	0.4	24	36	1.7	75	20	0.15	25
SH4234-18-133	1.8°	2.8	1.33	2.1	2.5	2.2	120	35	0.22	33
SH4240-18-168	1.8°	2.8	1.68	1.65	3.2	3.6	150	54	0.28	38
SH4248-18-168	1.8°	2.8	1.68	1.65	2.8	4.4	200	68	0.35	47

APPEARANCE SIZE



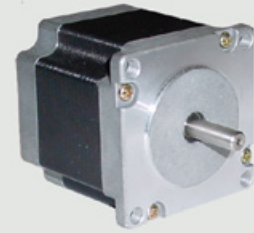
SH57 SERIES STEPPING MOTORS

Stepping motors hybrid type following the NEMA size standard. The motors are in standard available with winding for bipolar drive and in step angles 1.8 degrees. Both shaft sides with ball bearings. All motors can be tailored to meet different requirements of winding, mechanical configurations and electric interface.

MOTOR SPECIFICATIONS

- Step angle Accuracy 1.8° ±5% full step no load
- Resistance Accuracy ±10%
- Inductance Accuracy ±20%
- Temperature Rise 80°C Max. (rated current, 2 phase on)
- Ambient Temperature -20°C ~ +50°C
- Insulation Resistance 100Mohm Min, 500VDC
- Dielectric Strength 500VAC for one minute
- Shaft Radial Play 0.02Max.(450 g-load)
- Shaft Axial Play 0.08Max.(450 g-load)
- Max radial force 75N at 20 mm from the flange
- Max. axial force 15 N
- Customization is welcome

SH5741-18-280



OTHER SIZES STEPPING MOTORS



SH5756-18-280

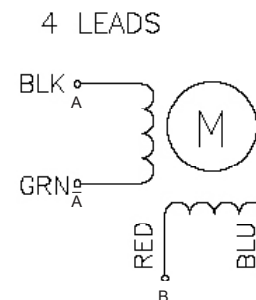
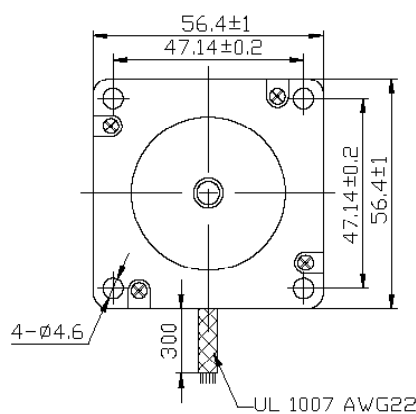
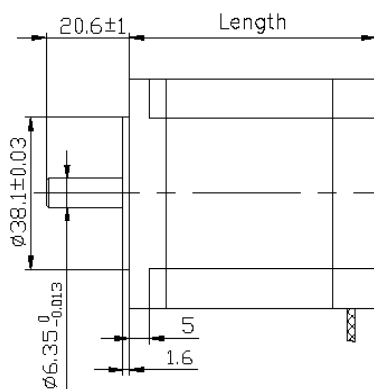


SH5776-18-280

STEPPING MOTOR DATA

MODEL	STEP ANGLE	VOLTAGE	CURRENT	RESISTANCE	INDUCTANCE	HOLDING TORQUE	DETENT TORQUE	ROTOR INTERIA	WEIGHT	LENGHT
		V	A	OHM	mH	Kg-cm	Kg-cm	g-cm ²	Kg	mm
SH5741-18-280	1.8°	2	2.8	0.7	1.4	5.5	0.21	120	0.45	41
SH5751-18-280	1.8°	2.3	2.8	0.83	2.2	10.1	0.36	275	0.65	51
SH5756-18-280	1.8°	2.5	2.8	0.9	2.5	12.6	0.40	300	0.70	56
SH5776-18-280	1.8°	2.5	2.8	1.13	3.6	18.9	0.68	480	1.00	76

APPEARANCE SIZE



SWITCHING SEQUENCE

STEP	A	B	A	B
1	+	+	-	-
2	-	+	+	-
3	-	-	+	+
4	+	-	-	+

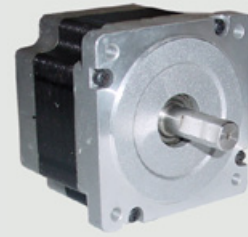
SH86 SERIES STEPPING MOTORS

Stepping motors hybrid type following the NEMA size standard. The motors are in standard available with winding for bipolar drive and in step angles 1.8 degrees. Both shaft sides with ball bearings. All motors can be tailored to meet different requirements of winding, mechanical configurations and electric interface.

MOTOR SPECIFICATIONS

- Step angle Accuracy 1.8° ±5% full step no load
- Resistance Accuracy ±10%
- Inductance Accuracy ±20%
- Temperature Rise 80°C Max. (rated current, 2 phase on)
- Ambient Temperature -20°C ~ +50°C
- Insulation Resistance 100Mohm Min, 500VDC
- Dielectric Strength 500VAC for one minute
- Shaft Radial Play 0.02Max.(450 g-load)
- Shaft Axial Play 0.08Max.(450 g-load)
- Max radial force 220 N at 20 mm from the flange
- Max. axial force 60 N
- Customization is welcome

SH8665-18-590



OTHER SIZES STEPPING MOTORS



SH8680-18-550

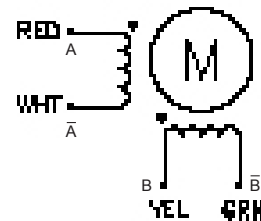
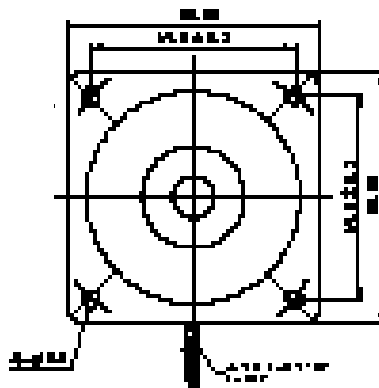
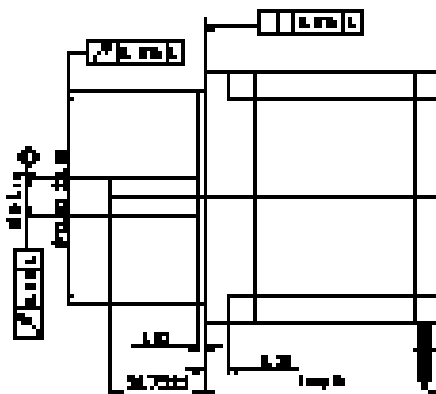


SH86118-18-600

STEPPING MOTOR DATA

MODEL	STEP ANGLE	CURRENT	RESISTANCE	INDUCTANCE	HOLDING TORQUE	DETENT TORQUE	ROTOR INERTIA	WEIGHT	LENGTH
	°	A	OHM	mH	Kg-cm	Kg-cm	g-cm ²	Kg	mm
SH8665-18-590	1.8°	5.9	0.28	1.7	34	0.8	1000	1.7	65
SH8680-18-550	1.8°	5.5	0.46	4.0	46	1.2	1400	2.3	80
SH86118-18-600	1.8°	6.0	0.6	6.5	87	2.4	2700	3.8	118
SH86156-18-620	1.8°	6.2	0.75	9.0	122	3.6	4000	5.4	156

APPEARANCE SIZE



SWITCHING SEQUENCE

STEP	A	B	A	B
1	+	+	-	-
2	-	+	+	-
3	-	-	+	+
4	+	-	-	+