



DC Motors 25W-500W General catalogue

TABLE OF CONTENTS

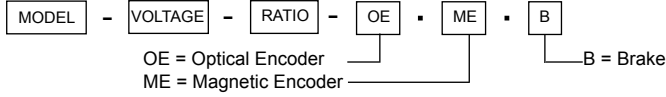
Tip: You can click the page numbers to enter the page they refer to

Length Diameter	79-90mm	90-100mm	100-110mm	110-120mm	120-150mm	150-180mm
Ø 43	D4385 P.4 D4387 P.5					
Ø 54			D54103 P.6			
Ø 64			D64108 P.7			
Ø 80		D8095 P.8				
Ø 100	D10079 P.9					
Ø 109					D109141 P.10	D109175 P.11
Ø 123						D123182 P.12

ENCODER OR BRAKE OPTIONS

This line of our motors and gear motors are also available with optical OE or magnetic encoder ME or electric brake B. Please check our price list and part numbers for the availability of combinations.

MODEL NO. DESIGNATIONS

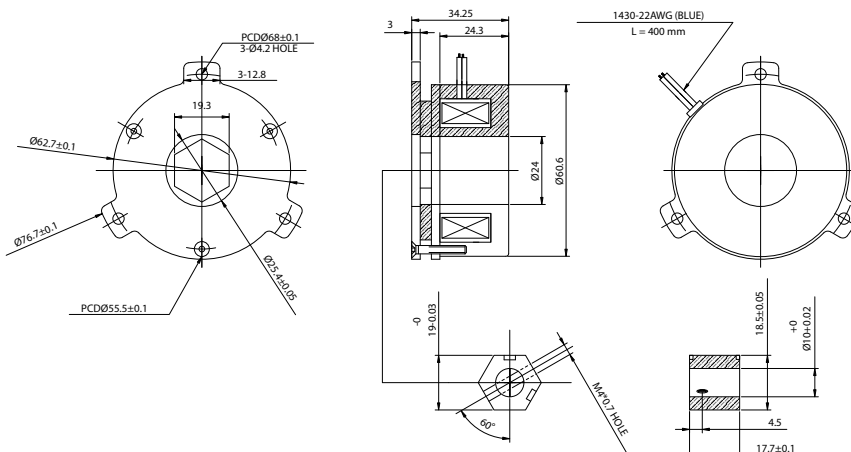


Example: D4385-12-OE

ENCODER DATA		MAGNETIC		OPTICAL	
Pulses per revolution PPR two channels together		24		1000	
Counts per revolution CPR two channels together		48		2000	
Phase shift		90 degrees		90 degrees	
VCC	+5 VDC	Yellow lead	+5 VDC	Pin 1	
GND	0 VDC	Green lead	0 VDC	Pin 5 Pin 8	
Signal A		Blue lead		A- Pin 6	
Signal B		Yellow lead		B- Pin 7	
Current				< 80 mA	
Index		-		Z+ Pin 4	
Output wave				Line driver	
Frequency response				25 KHz max.	
Connector				DB9 female	
Weight				< 100 g	

BRAKE DATA	
Voltage	24VDC
Power	16W
Impedance	35Ω ±5%
Insulating Level	F
Dynamic Friction	35 KGF-cm
Static Friction	40 KGF-cm
Insulating Impedance	500 VDC / 50 MΩ
Insulating Withstanding Pressure	1500 VAC / 1mA / 1SEC
Releasing Time	40 msec
Attracting Time	140 msec
Operating Voltage	12V
Releasing Voltage	5V
Gap	0.12~0.15 mm
Weight	0.7 kg

BRAKE SPECIFICATIONS



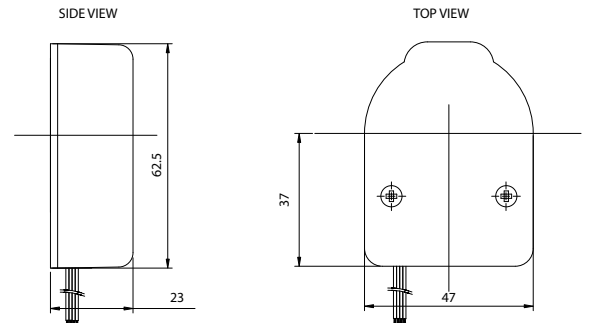
ENCODER



BRAKE



ENCODER APPEARANCE SIZE

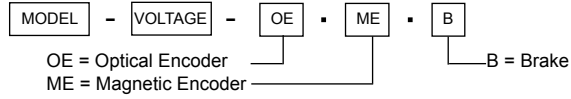


D4385 DC MOTOR

Brush dc motors with robust design and closed motor body. Motor shafts are supported by ball bearings. Configurations may include gearbox, encoder and brake depending on motor model. Please check the part description for proper selections of combination. Customizations are welcome.



MODEL NO. DESIGNATIONS



Example: D4385-12-OE

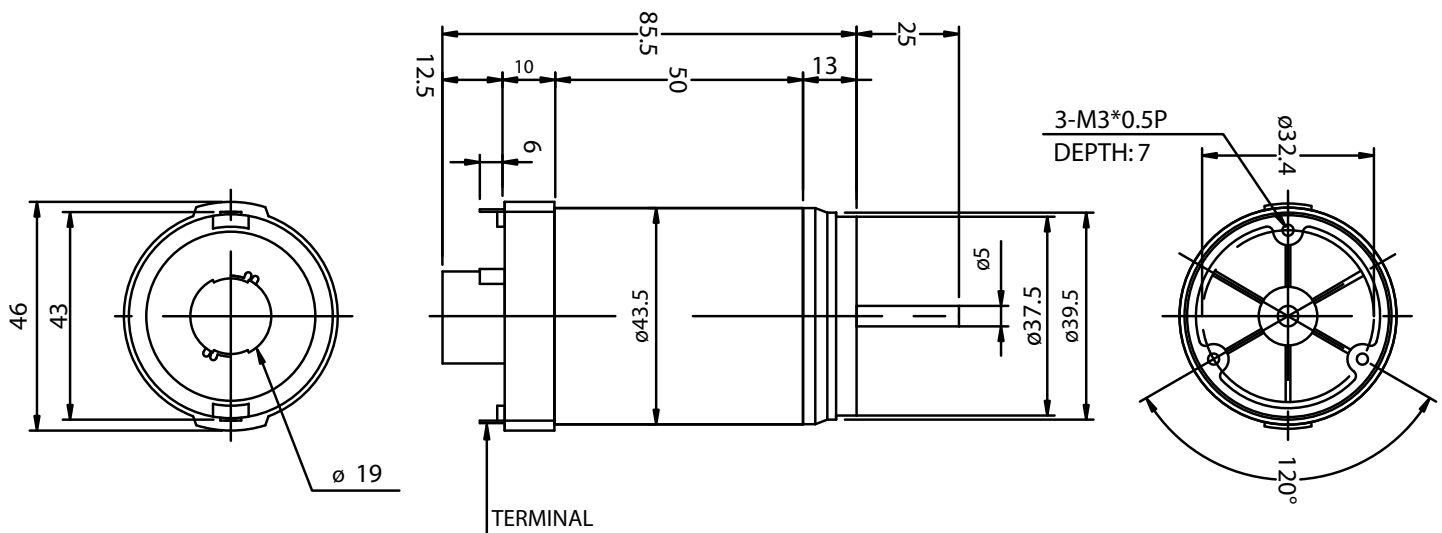
MOTOR FEATURES

- Robust design, closed motor body
- Ball bearings
- Gearbox combinations
- Encoder options
- Brake options
- Customizations are welcome

BRUSHLESS MOTOR DATA

MODEL	NOMINAL VOLTAGE (VDC)	NO LOAD		AT MAX EFFICIENCY				
		SPEED (RPM)	CURRENT (A)	SPEED (RPM)	CURRENT (A)	TORQUE (Kg-cm)	WATT (W)	EFF (%)
D4385-12	12	3600	1.3	2800	2	0.48	24	59
D4385-24	24	4000	0.6	3300	1.1	0.47	26.4	60

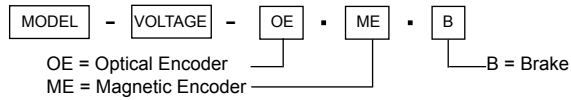
APPEARANCE SIZE



D4387 DC MOTOR

Brush dc motors with robust design and closed motor body. Motor shafts are supported by ball bearings. Configurations may include gearbox, encoder and brake depending on motor model. Please check the part description for proper selections of combination. Customizations are welcome.

MODEL NO. DESIGNATIONS



Example: D4385-12-OE

MOTOR FEATURES

- Robust design, closed motor body
- Ball bearings
- Gearbox combinations
- Encoder options
- Brake options
- Customizations are welcome

D4387

ENCODER VERSION AVAILABLE

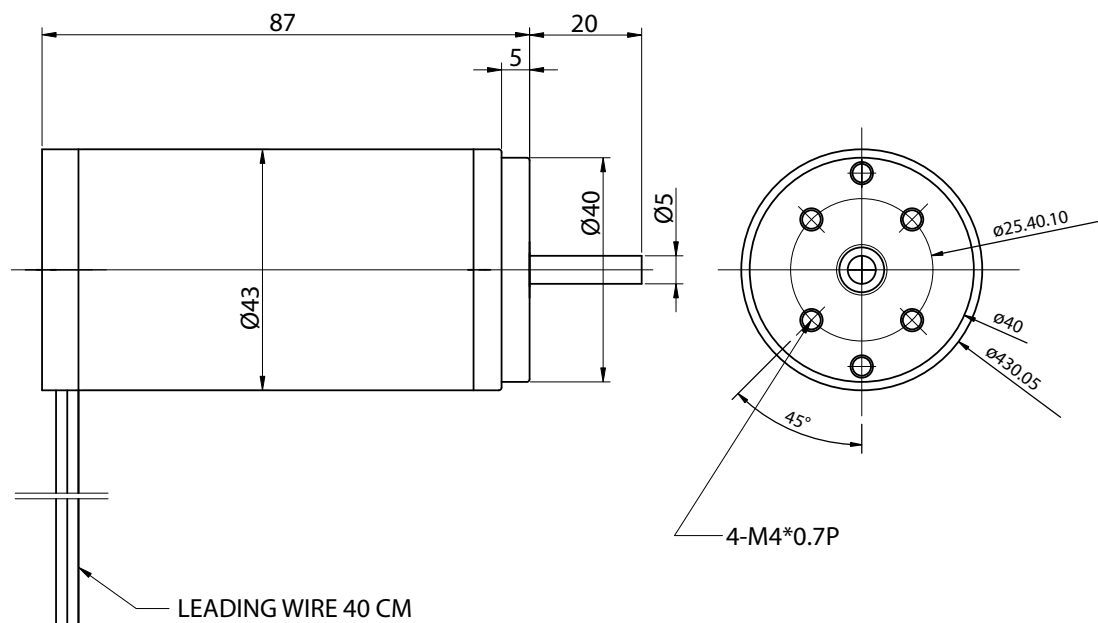
SEE SEPARATE DATA SHEET

TRANSMOTEC SWEDEN AB

BRUSHLESS MOTOR DATA

MODEL	NOMINAL VOLTAGE (VDC)	NO LOAD		AT MAX EFFICIENCY				
		SPEED (RPM)	CURRENT (A)	SPEED (RPM)	CURRENT (A)	TORQUE (Kg-cm)	WATT (W)	EFF (%)
D4387-12	12	4900	1.4	3600	2.9	0.48	34.8	59
D4387-24	24	4800	0.8	3300	1.3	0.5	31.2	62

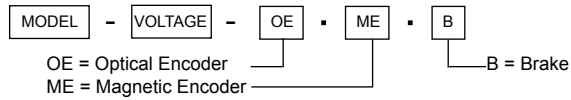
APPEARANCE SIZE



D54103 DC MOTOR

Brush dc motors with robust design and closed motor body. Motor shafts are supported by ball bearings. Configurations may include gearbox, encoder and brake depending on motor model. Please check the part description for proper selections of combination. Customizations are welcome.

MODEL NO. DESIGNATIONS



Example: D4385-12-OE

MOTOR FEATURES

- Robust design, closed motor body
- Ball bearings
- Gearbox combinations
- Encoder options
- Brake options
- Customizations are welcome

D54103

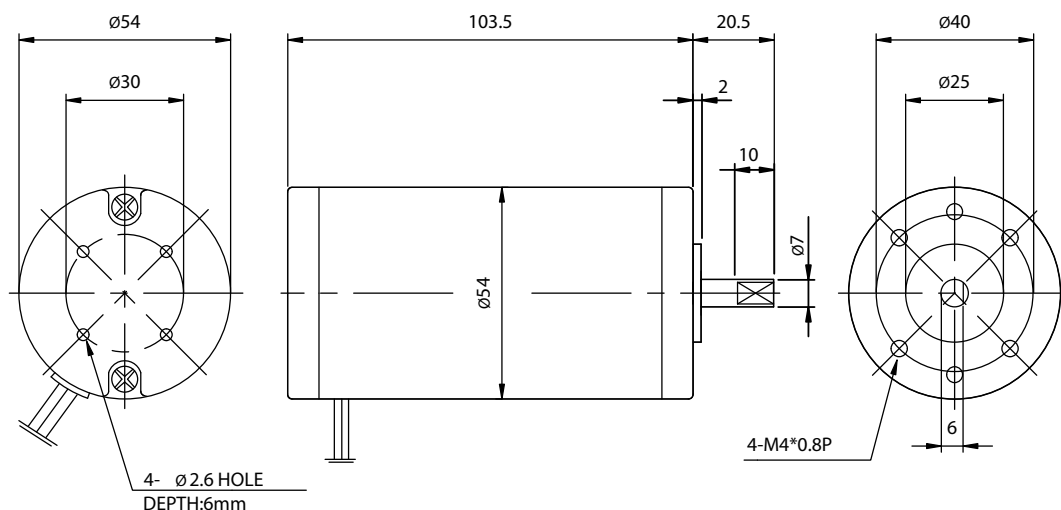
ENCODER AND BRAKE VERSION AVAILABLE

SEE SEPARATE DATA SHEET

BRUSHLESS MOTOR DATA

MODEL	NOMINAL VOLTAGE (VDC)	NO LOAD		AT MAX EFFICIENCY				
		SPEED (RPM)	CURRENT (A)	SPEED (RPM)	CURRENT (A)	TORQUE (Kg-cm)	WATT (W)	EFF (%)
D54103-12	12	3600	0.5	3100	3.3	0.9	39.6	70
D54103-24	24	3600	0.4	3000	2.2	1.2	52.8	75

APPEARANCE SIZE

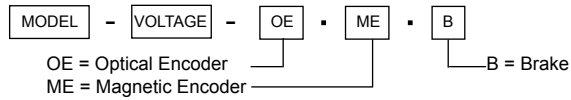


D10079 DC MOTOR

Brush dc motors with robust design and closed motor body. Motor shafts are supported by ball bearings. Configurations may include gearbox, encoder and brake depending on motor model. Please check the part description for proper selections of combination. Customizations are welcome.



MODEL NO. DESIGNATIONS



Example: D4385-12-OE

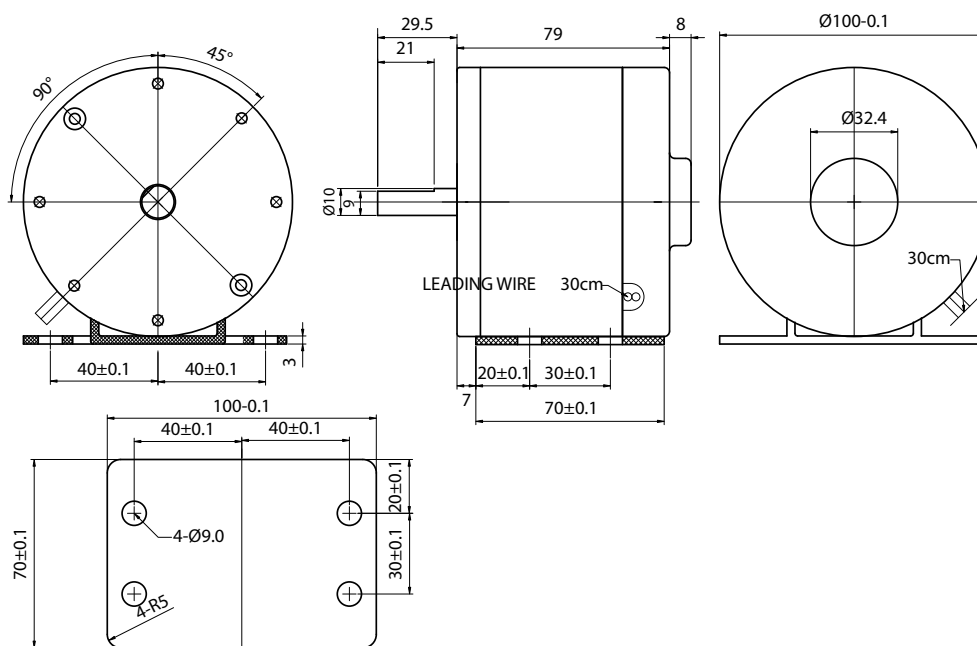
MOTOR FEATURES

- Robust design, closed motor body
- Ball bearings
- Gearbox combinations
- Encoder options
- Brake options
- Customizations are welcome

BRUSHLESS MOTOR DATA

MODEL	NOMINAL VOLTAGE (VDC)	NO LOAD		AT MAX EFFICIENCY				
		SPEED (RPM)	CURRENT (A)	SPEED (RPM)	CURRENT (A)	TORQUE (Kg-cm)	WATT (W)	EFF (%)
D10079-12	12	3100	3.5	2585	15.2	4.8	182	71
D10079-24	24	3000	1.7	2500	7.8	4.9	185	73

APPEARANCE SIZE



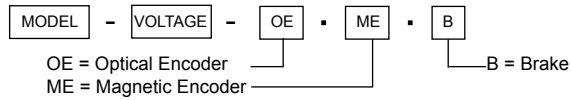
D109141 DC MOTOR

Brush dc motors with robust design and closed motor body. Motor shafts are supported by ball bearings. Configurations may include gearbox, encoder and brake depending on motor model. Please check the part description for proper selections of combination. Customizations are welcome.



TRANSMOTEC SWEDEN AB

MODEL NO. DESIGNATIONS



Example: D4385-12-OE

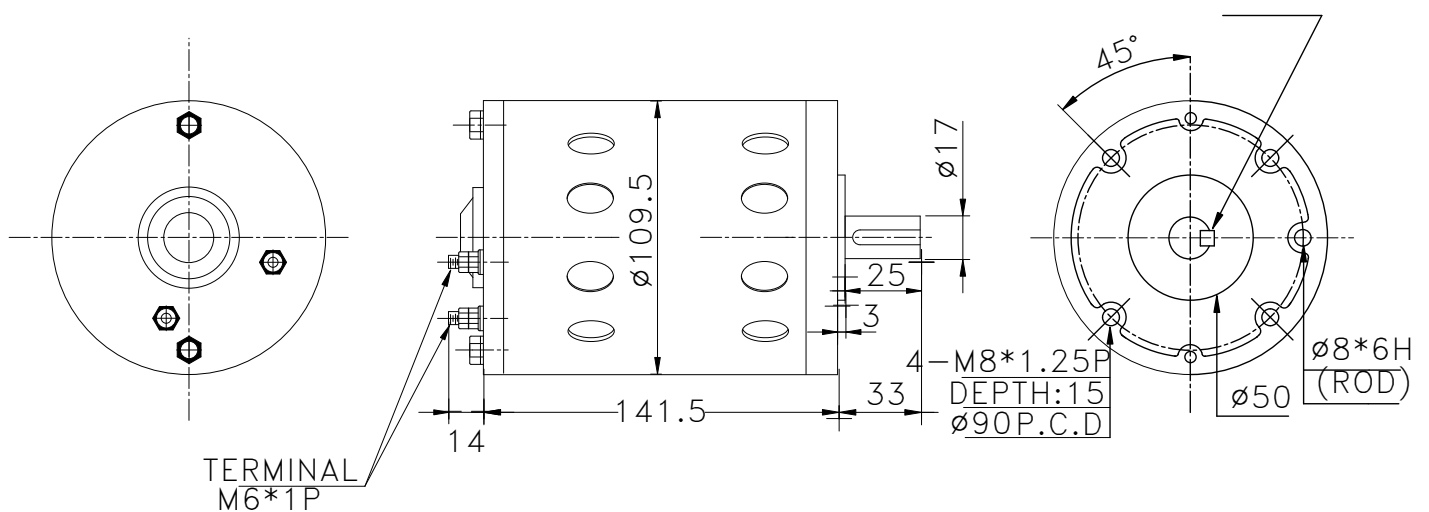
MOTOR FEATURES

- Robust design, closed motor body
- Ball bearings
- Gearbox combinations
- Encoder options
- Brake options
- Customizations are welcome

BRUSHLESS MOTOR DATA

MODEL	NOMINAL VOLTAGE (VDC)	NO LOAD		AT MAX EFFICIENCY				
		SPEED (RPM)	CURRENT (A)	SPEED (RPM)	CURRENT (A)	TORQUE (Kg-cm)	WATT (W)	EFF (%)
D109141-12	12	2700	10.6	2280	31.5	9	380	56
D109141-24	24	2700	5.8	2340	16.6	9.9	410	62

APPEARANCE SIZE



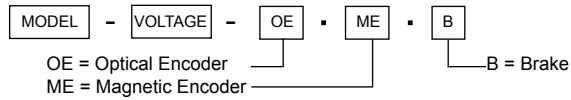
D109175 DC MOTOR

Brush dc motors with robust design and closed motor body. Motor shafts are supported by ball bearings. Configurations may include gearbox, encoder and brake depending on motor model. Please check the part description for proper selections of combination. Customizations are welcome.



TRANSMOTEC SWEDEN AB

MODEL NO. DESIGNATIONS



Example: D4385-12-OE

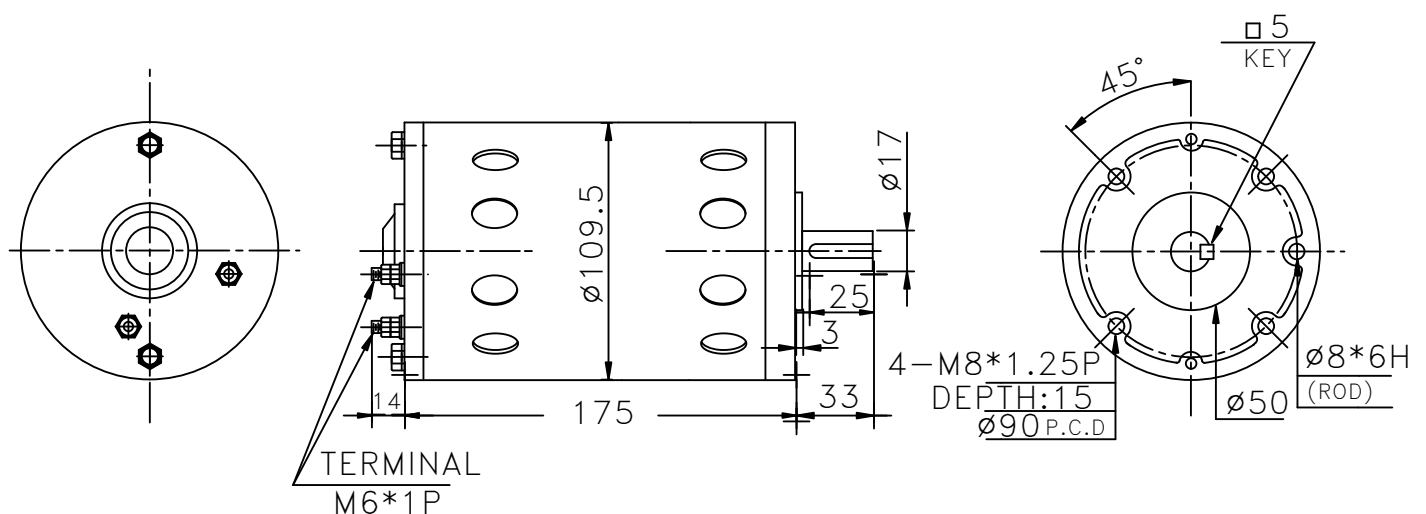
MOTOR FEATURES

- Robust design, closed motor body
- Ball bearings
- Gearbox combinations
- Encoder options
- Brake options
- Customizations are welcome

BRUSHLESS MOTOR DATA

MODEL	NOMINAL VOLTAGE (VDC)	NO LOAD		AT MAX EFFICIENCY				
		SPEED (RPM)	CURRENT (A)	SPEED (RPM)	CURRENT (A)	TORQUE (Kg-cm)	WATT (W)	EFF (%)
D109175-12	12	2000	5.1	1680	27.8	16.2	352	74.8
D109175-24	24	1900	2.6	1600	14.3	14.9	339	74.1

APPEARANCE SIZE

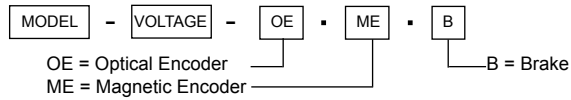


D123182 DC MOTOR

Brush dc motors with robust design and closed motor body. Motor shafts are supported by ball bearings. Configurations may include gearbox, encoder and brake depending on motor model. Please check the part description for proper selections of combination. Customizations are welcome.



MODEL NO. DESIGNATIONS



Example: D4385-12-OE

MOTOR FEATURES

- Robust design, closed motor body
- Ball bearings
- Gearbox combinations
- Encoder options
- Brake options
- Customizations are welcome

BRUSHLESS MOTOR DATA

MODEL	NOMINAL VOLTAGE (VDC)	NO LOAD		AT MAX EFFICIENCY				
		SPEED (RPM)	CURRENT (A)	SPEED (RPM)	CURRENT (A)	TORQUE (Kg-cm)	WATT (W)	EFF (%)
D123182-12	12	1800	6	1500	23	14.9	320	74
D123182-24	24	2400	3.2	2020	26	20.3	552	74.3

APPEARANCE SIZE

