

BR2245 BRUSHLESS DC MOTOR

Transmotec brushless dc motors covers a large range of miniature sized motors to heavy duty models. The designs include both round and square shaped motor bodies.

All motors include hall-effect sensors for phase shift commutation.

Standard motors are kept in stock for quick delivery and customized motors are offered upon request. Customizations and configurations are typically different windings, cable and connections, shaft outputs, assembly to gear heads and encoders etc.

Additional motor data is available from our web site data base as well as CAD drawings. For further information and requests, you are welcome to contact our professional sales and engineering staff.

FEATURES

- Large range of miniature motors to heavy duty models
- Round and square shaped motor bodies
- Integral hall-effect sensors
- Quick delivery from stock
- Customisations are welcome

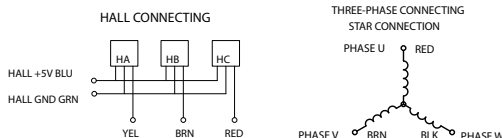
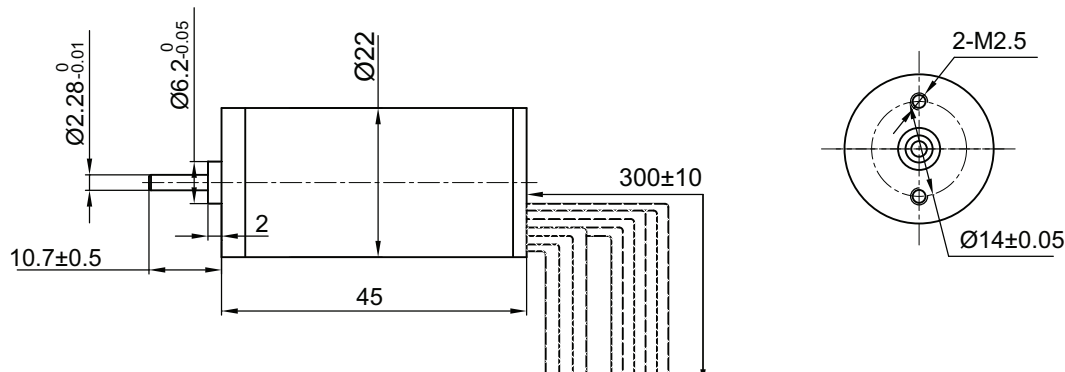


BRUSHLESS MOTOR DATA

	Units	BR2245-12	BR2245-24
Nominal voltage	V	12	24
Nominal power	W	4.3	3.8
No load speed	rpm	7500	7000
No load current	mA	40	30
Nominal speed	rpm	4800	4800
Nominal torque (max. continuous torque)	mNm	9.6	9.6
Nominal current (max. continuous current)	A	1.1	0.7
Stall torque	mNm	20	21
Max. Efficiency	%	50	50
Terminal resistance phase to phase	Ω	5.25	23
Terminal inductance phase to phase	mH	1.6	6.2
Torque constant	mNm / A	15.84	30.2
Rotor inertia	gcm ²	0.66	0.66

	Units	B2245
Ambient temperature	$^{\circ}\text{C}$	-15 $^{\circ}\text{C}$ ----- +40 $^{\circ}\text{C}$
Max. permissible winding temperature	$^{\circ}\text{C}$	120
Max. permissible speed	rpm	15000
Axial play at axial load < 3,5 N	mm	0.08
Axial play at axial load > 3,5 N	mm	0.08
Radial play	mm@g	0.02@460
Max. axial load (dynamic)	N	4.4
Max. force for press fits (static)	N	4.4
Max. force for press fits (static, shaft supported)	N	4.4
Max. radial loading, 10 mm from flange	N	4
Number of pole pairs		8
Number of phases		3
Weight of motor	g	70

APPEARANCE SIZE



BR2268 BRUSHLESS DC MOTOR

Transmotec brushless dc motors covers a large range of miniature sized motors to heavy duty models. The designs include both round and square shaped motor bodies.

All motors include hall-effect sensors for phase shift commutation.

Standard motors are kept in stock for quick delivery and customized motors are offered upon request. Customizations and configurations are typically different windings, cable and connections, shaft outputs, assembly to gear heads and encoders etc.

Additional motor data is available from our web site data base as well as CAD drawings. For further information and requests, you are welcome to contact our professional sales and engineering staff.

FEATURES

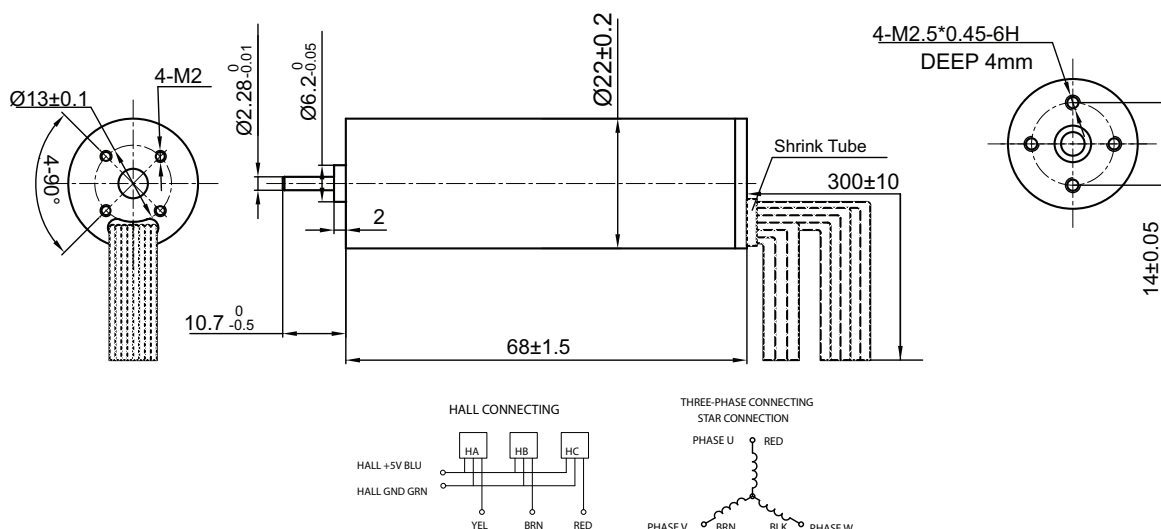
- Large range of miniature motors to heavy duty models
- Round and square shaped motor bodies
- Integral hall-effect sensors
- Quick delivery from stock
- Customisations are welcome



BRUSHLESS MOTOR DATA

	Units	BR2268-12	BR2268-24		Units	BR2268
Nominal voltage	V	12	24	Ambient temperature	°C	-15°C ----- +40°C
Nominal power	W	7	7	Max. permissible winding temperature	°C	120
No load speed	rpm	6000	6000	Max. permissible speed	rpm	15000
No load current	mA	40	40	Axial play at axial load < 3,5 N	mm	0.08
Nominal speed	rpm	3500	3500	Axial play at axial load > 3,5 N	mm	0.08
Nominal torque (max. continuous torque)	mNm	24	24	Radial play	mm@g	0.02@450
Nominal current (max. continuous current)	A	1.3	0.65	Max. axial load (dynamic)	N	4,4
Stall torque	mNm	48	50	Max. force for press fits (static)	N	4,4
Max. Efficiency	%	56	56	Max. force for press fits (static, shaft supported)	N	4,4
Terminal resistance phase to phase	Ω	2.86	11.8	Max. radial loading, 10 mm from flange	N	4
Terminal inductance phase to phase	mH	1.05	4.2	Number of pole pairs		8
Torque constant	mNm / A	18.22	35.5	Number of phases		3
Rotor inertia	gcm ²	1.32	1.32	Weight of motor	g	120

APPEARANCE SIZE



BR2826 BRUSHLESS DC MOTOR

Transmotec brushless dc motors covers a large range of miniature sized motors to heavy duty models. The designs include both round and square shaped motor bodies. All motors include hall-effect sensors for phase shift commutation. Standard motors are kept in stock for quick delivery and customized motors are offered upon request. Customizations and configurations are typically different windings, cable and connections, shaft outputs, assembly to gear heads and encoders etc. Additional motor data is available from our web site data base as well as CAD drawings. For further information and requests, you are welcome to contact our professional sales and engineering staff.

FEATURES

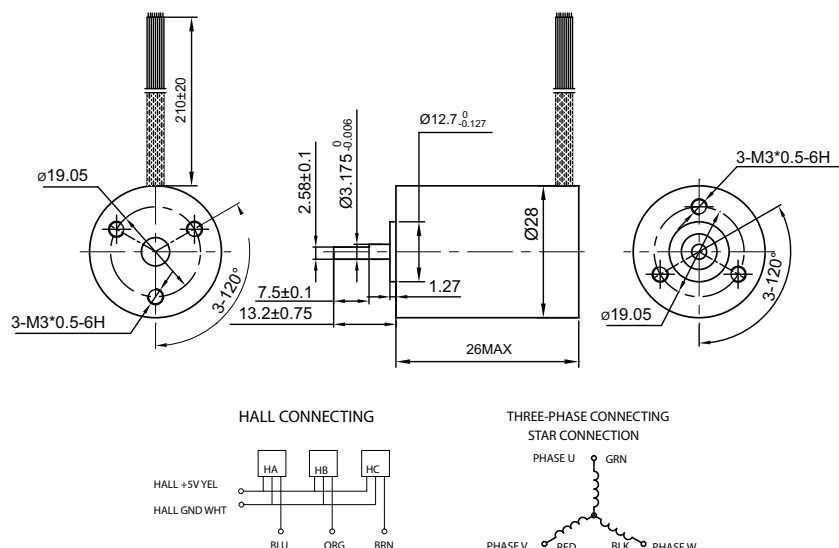
- Large range of miniature motors to heavy duty models
- Round and square shaped motor bodies
- Integral hall-effect sensors
- Quick delivery from stock
- Customisations are welcome



BRUSHLESS MOTOR DATA

	Units	BR2826-12	BR2826-24		Units	BR2826
Nominal voltage	V	12	24	Ambient temperature	°C	-15°C ----- +40°C
Nominal power	W	5	5	Max. permissible winding temperature	°C	120
No load speed	rpm	10000	9600	Max. permissible speed	rpm	15000
No load current	mA	30	30	Axial play at axial load < 3,5 N	mm	0.08
Nominal speed	rpm	8000	8000	Axial play at axial load > 3,5 N	mm	0.08
Nominal torque (max. continuous torque)	mNm	8	8	Radial play	mm@g	0.02@450
Nominal current (max. continuous current)	A	1.25	1.5	Max. axial load (dynamic)	N	4.4
Stall torque	mNm	21	21	Max. force for press fits (static)	N	4.4
Max. Efficiency	%	50	52	Max. force for press fits (static, shaft supported)	N	4.4
Terminal resistance phase to phase	Ω	5.4	8	Max. radial loading, 10 mm from flange	N	4
Terminal inductance phase to phase	mH	1.68	2	Number of pole pairs		4
Torque constant	mNm / A	10.2	13.7	Number of phases		3
Rotor inertia	gcm ²	2.35	2.35	Weight of motor	g	60

APPEARANCE SIZE



BR2838 BRUSHLESS DC MOTOR

Transmotec brushless dc motors covers a large range of miniature sized motors to heavy duty models. The designs include both round and square shaped motor bodies. All motors include hall-effect sensors for phase shift commutation. Standard motors are kept in stock for quick delivery and customized motors are offered upon request. Customizations and configurations are typically different windings, cable and connections, shaft outputs, assembly to gear heads and encoders etc. Additional motor data is available from our web site data base as well as CAD drawings. For further information and requests, you are welcome to contact our professional sales and engineering staff.

FEATURES

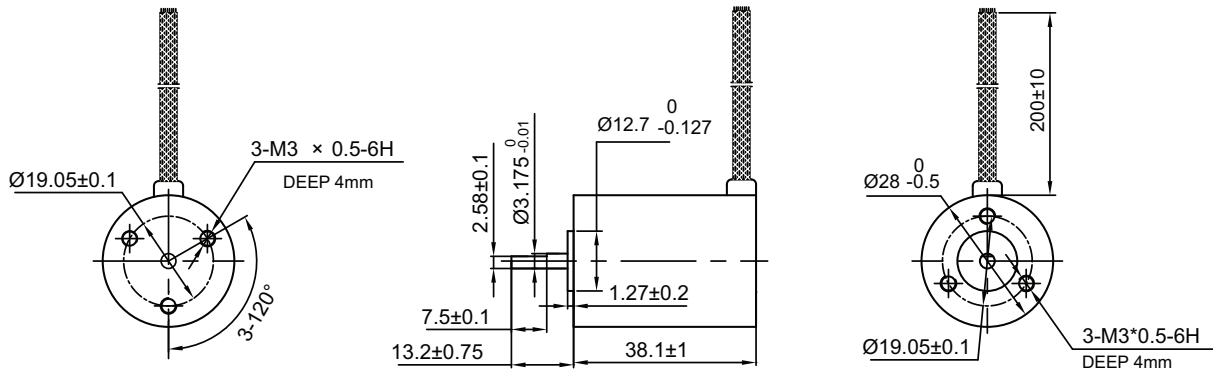
- Large range of miniature motors to heavy duty models
- Round and square shaped motor bodies
- Integral hall-effect sensors
- Quick delivery from stock
- Customisations are welcome



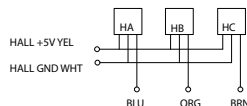
BRUSHLESS MOTOR DATA

	Units	BR2838-12	BR2838-24		Units	BR2838
Nominal voltage	V	12	24	Ambient temperature	°C	-15°C ----- +40°C
Nominal power	W	14	14	Max. permissible winding temperature	°C	120
No load speed	rpm	13000	13000	Max. permissible speed	rpm	15000
No load current	mA	30	40	Axial play at axial load < 3,5 N	mm	0.08
Nominal speed	rpm	10000	10000	Axial play at axial load > 3,5 N	mm	0.08
Nominal torque (max. continuous torque)	mNm	17	17	Radial play	mm@g	0.02@450
Nominal current (max. continuous current)	A	2	2,5	Max. axial load (dynamic)	N	4,4
Stall torque	mNm	45	45	Max. force for press fits (static)	N	4,4
Max. Efficiency	%	60	64	Max. force for press fits (static, shaft supported)	N	4,4
Terminal resistance phase to phase	Ω	1,1	4,2	Max. radial loading, 10 mm from flange	N	4
Terminal inductance phase to phase	mH	0,4	1,69	Number of pole pairs		4
Torque constant	mNm / A	10	16	Number of phases		3
Rotor inertia	gcm ²	3,69	3,69	Weight of motor	g	82

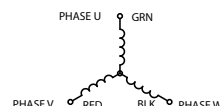
APPEARANCE SIZE



HALL CONNECTING



THREE-PHASE CONNECTING STAR CONNECTION



BR2877 BRUSHLESS DC MOTOR

Transmotec brushless dc motors covers a large range of miniature sized motors to heavy duty models. The designs include both round and square shaped motor bodies. All motors include hall-effect sensors for phase shift commutation. Standard motors are kept in stock for quick delivery and customized motors are offered upon request. Customizations and configurations are typically different windings, cable and connections, shaft outputs, assembly to gear heads and encoders etc. Additional motor data is available from our web site data base as well as CAD drawings. For further information and requests, you are welcome to contact our professional sales and engineering staff.

FEATURES

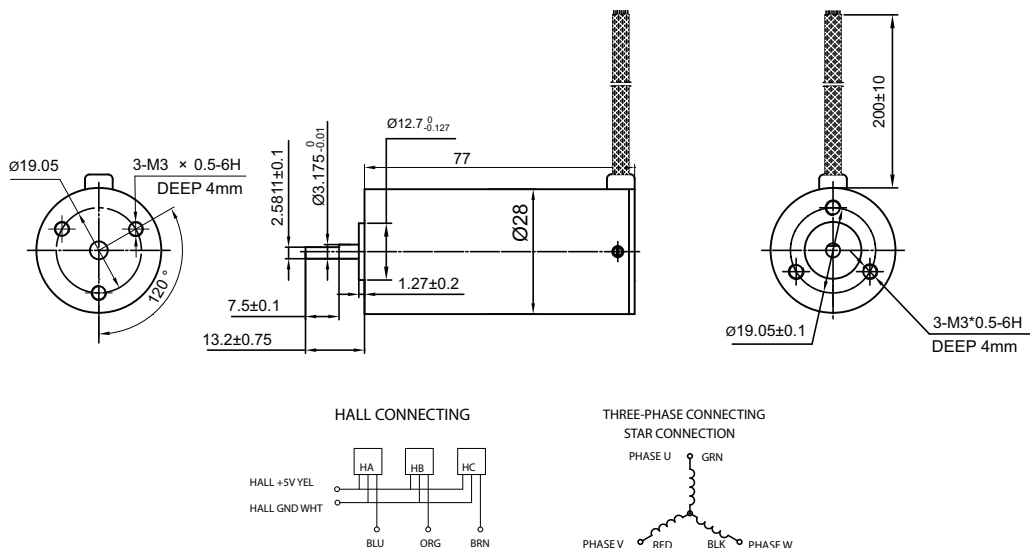
- Large range of miniature motors to heavy duty models
- Round and square shaped motor bodies
- Integral hall-effect sensors
- Quick delivery from stock
- Customisations are welcome



BRUSHLESS MOTOR DATA

	Units	BR2877-12	BR2877-24		Units	BR2877
Nominal voltage	V	12	24	Ambient temperature	°C	-15°C ----- +40°C
Nominal power	W	19	19	Max. permissible winding temperature	°C	120
No load speed	rpm	6000	6000	Max. permissible speed	rpm	15000
No load current	mA	40	40	Axial play at axial load < 3,5 N	mm	0.08
Nominal speed	rpm	3700	3700	Axial play at axial load > 3,5 N	mm	0.08
Nominal torque (max. continuous torque)	mNm	60	60	Radial play	mm@g	0.02@450
Nominal current (max. continuous current)	A	2,7	4,2	Max. axial load (dynamic)	N	4,4
Stall torque	mNm	150	150	Max. force for press fits (static)	N	4,4
Max. Efficiency	%	65	68	Max. force for press fits (static, shaft supported)	N	4,4
Terminal resistance phase to phase	Ω	1,24	4,2	Max. radial loading, 10 mm from flange	N	4
Terminal inductance phase to phase	mH	0,64	2,2	Number of pole pairs		4
Torque constant	mNm / A	18,3	35,56	Number of phases		3
Rotor inertia	gcm ²	10,98	10,98	Weight of motor	g	200

APPEARANCE SIZE



BR3337 BRUSHLESS DC MOTOR

Transmotec brushless dc motors covers a large range of miniature sized motors to heavy duty models. The designs include both round and square shaped motor bodies.

All motors include hall-effect sensors for phase shift commutation.

Standard motors are kept in stock for quick delivery and customized motors are offered upon request. Customizations and configurations are typically different windings, cable and connections, shaft outputs, assembly to gear heads and encoders etc.

Additional motor data is available from our web site data base as well as CAD drawings. For further information and requests, you are welcome to contact our professional sales and engineering staff.

FEATURES

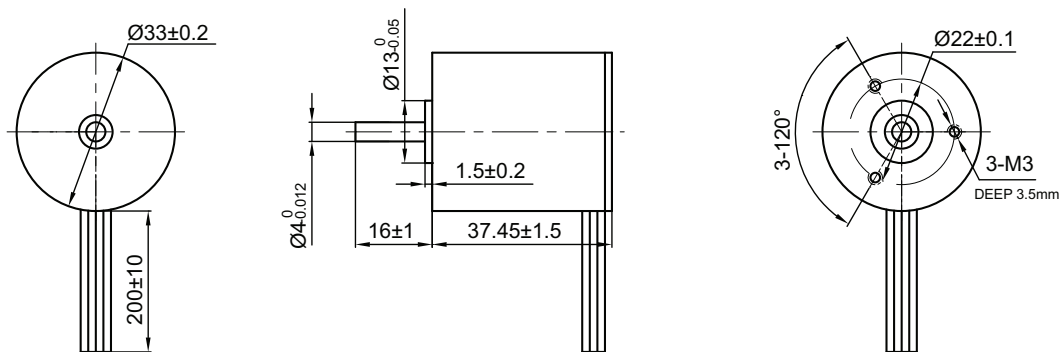
- Large range of miniature motors to heavy duty models
- Round and square shaped motor bodies
- Integral hall-effect sensors
- Quick delivery from stock
- Customisations are welcome



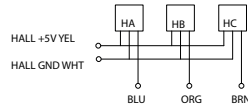
BRUSHLESS MOTOR DATA

	Units	BR3337-12	BR3337-24		Units	BR3337
Nominal voltage	V	12	24	Ambient temperature	°C	-15°C ----- +40°C
Nominal power	W	4	7	Max. permissible winding temperature	°C	120
No load speed	rpm	5000	4500	Max. permissible speed	rpm	15000
No load current	mA	30	30	Axial play at axial load < 3,5 N	mm	0.08
Nominal speed	rpm	3000	3000	Axial play at axial load > 3,5 N	mm	0.08
Nominal torque (max. continuous torque)	mNm	26,4	26,4	Radial play	mm@g	0.02@450
Nominal current (max. continuous current)	A	0,8	1,5	Max. axial load (dynamic)	N	4,4
Stall torque	mNm	50	66	Max. force for press fits (static)	N	4,4
Max. Efficiency	%	55	56	Max. force for press fits (static, shaft supported)	N	4,4
Terminal resistance phase to phase	Ω	3,4	12,8	Max. radial loading, 10 mm from flange	N	4
Terminal inductance phase to phase	mH	1,8	7	Number of pole pairs		4
Torque constant	mNm / A	23,05	46,09	Number of phases		3
Rotor inertia	gcm ²	7,95	7,95	Weight of motor	g	85

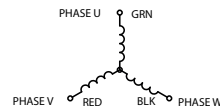
APPEARANCE SIZE



HALL CONNECTING



THREE-PHASE CONNECTING STAR CONNECTION

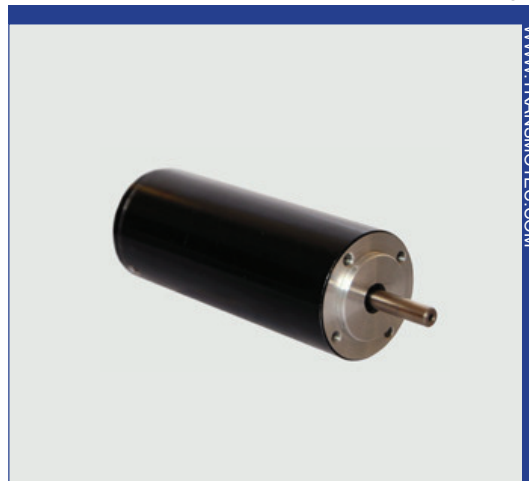


BR3380 BRUSHLESS DC MOTOR

Transmotec brushless dc motors covers a large range of miniature sized motors to heavy duty models. The designs include both round and square shaped motor bodies. All motors include hall-effect sensors for phase shift commutation. Standard motors are kept in stock for quick delivery and customized motors are offered upon request. Customizations and configurations are typically different windings, cable and connections, shaft outputs, assembly to gear heads and encoders etc. Additional motor data is available from our web site data base as well as CAD drawings. For further information and requests, you are welcome to contact our professional sales and engineering staff.

FEATURES

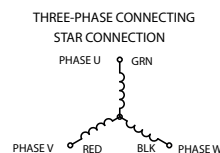
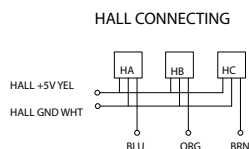
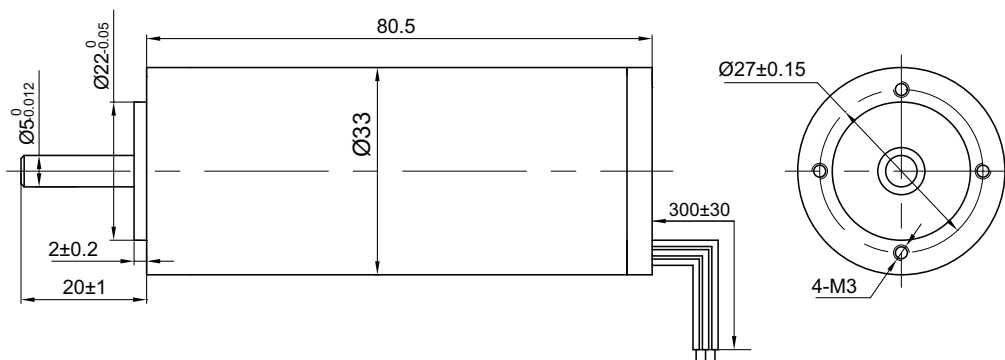
- Large range of miniature motors to heavy duty models
- Round and square shaped motor bodies
- Integral hall-effect sensors
- Quick delivery from stock
- Customisations are welcome



BRUSHLESS MOTOR DATA

	Units	BR3380		Units	BR3380
Nominal voltage	V	24	Ambient temperature	°C	-15°C ----- +40°C
Nominal power	W	41.5	Max. permissible winding temperature	°C	120
No load speed	rpm	11000	Max. permissible speed	rpm	15000
No load current	mA	50	Axial play at axial load < 3,5 N	mm	0,06
Nominal speed	rpm	10000	Axial play at axial load > 3,5 N	mm	0,06
Nominal torque (max. continuous torque)	mNm	48	Radial play	mm@g	0.02@450
Nominal current (max. continuous current)	A	11,5	Max. axial load (dynamic)	N	4,4
Stall torque	mNm	350	Max. force for press fits (static)	N	4,4
Max. Efficiency	%	75	Max. force for press fits (static, shaft supported)	N	4,4
Terminal resistance phase to phase	Ω	1,43	Max. radial loading, 10 mm from flange	N	4
Terminal inductance phase to phase	mH	0,88	Number of pole pairs		4
Torque constant	mNm / A	30,62	Number of phases		3
Rotor inertia	gcm ²	23,55	Weight of motor	g	200

APPEARANCE SIZE



BR4230 BRUSHLESS DC MOTOR

Transmotec brushless dc motors covers a large range of miniature sized motors to heavy duty models. The designs include both round and square shaped motor bodies.

All motors include hall-effect sensors for phase shift commutation.

Standard motors are kept in stock for quick delivery and customized motors are offered upon request. Customizations and configurations are typically different windings, cable and connections, shaft outputs, assembly to gear heads and encoders etc.

Additional motor data is available from our web site data base as well as CAD drawings. For further information and requests, you are welcome to contact our professional sales and engineering staff.

FEATURES

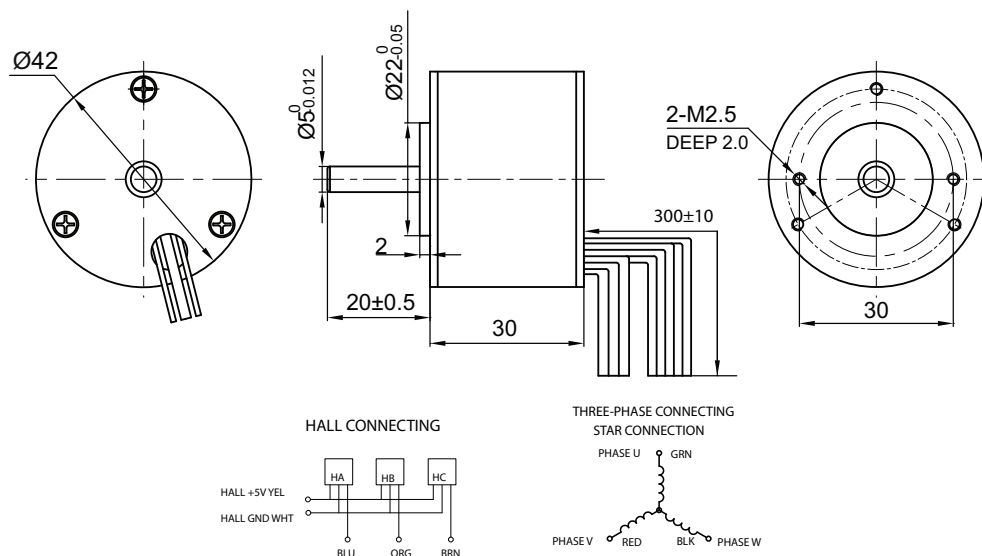
- Large range of miniature motors to heavy duty models
- Round and square shaped motor bodies
- Integral hall-effect sensors
- Quick delivery from stock
- Customisations are welcome



BRUSHLESS MOTOR DATA

	Units	BR4230-12	BR4230-24		Units	BR4230
Nominal voltage	V	12	24	Ambient temperature	°C	-15°C ----- +40°C
Nominal power	W	10	8.4	Max. permissible winding temperature	°C	120
No load speed	rpm	6600	5500	Max. permissible speed	rpm	15000
No load current	mA	40	40	Axial play at axial load < 3,5 N	mm	0,07
Nominal speed	rpm	5000	4000	Axial play at axial load > 3,5 N	mm	0,07
Nominal torque (max. continuous torque)	mNm	24	24	Radial play	mm@g	0.02@450
Nominal current (max. continuous current)	A	1,6	2	Max. axial load (dynamic)	N	4,4
Stall torque	mNm	60	60	Max. force for press fits (static)	N	4,4
Max. Efficiency	%	55	60	Max. force for press fits (static, shaft supported)	N	4,4
Terminal resistance phase to phase	Ω	1,08	5,9	Max. radial loading, 10 mm from flange	N	4
Terminal inductance phase to phase	mH	0,84	5,1	Number of pole pairs		8
Torque constant	mNm / A	16,12	48,7	Number of phases		3
Rotor inertia	gcm ²	24	24	Weight of motor	g	250

APPEARANCE SIZE



BR4260 BRUSHLESS DC MOTOR

Transmotec brushless dc motors covers a large range of miniature sized motors to heavy duty models. The designs include both round and square shaped motor bodies. All motors include hall-effect sensors for phase shift commutation. Standard motors are kept in stock for quick delivery and customized motors are offered upon request. Customizations and configurations are typically different windings, cable and connections, shaft outputs, assembly to gear heads and encoders etc. Additional motor data is available from our web site data base as well as CAD drawings. For further information and requests, you are welcome to contact our professional sales and engineering staff.

FEATURES

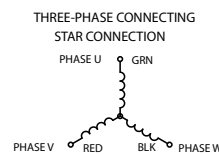
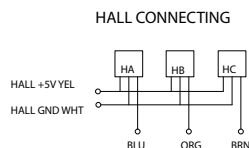
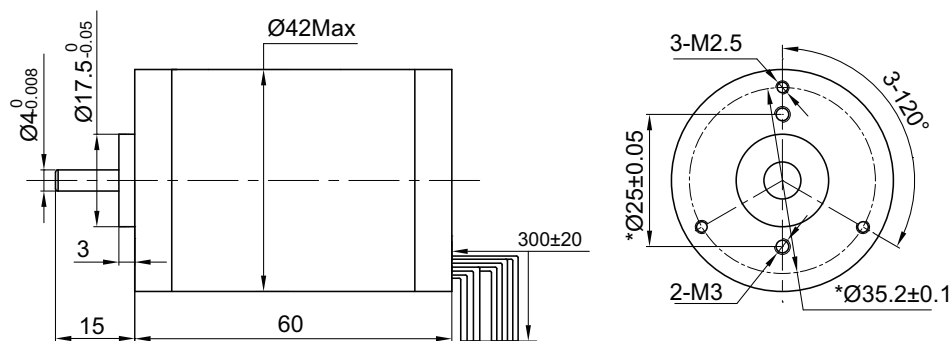
- Large range of miniature motors to heavy duty models
- Round and square shaped motor bodies
- Integral hall-effect sensors
- Quick delivery from stock
- Customisations are welcome



BRUSHLESS MOTOR DATA

	Units	BR4260-12	BR4260-24		Units	BR4260
Nominal voltage	V	12	24	Ambient temperature	°C	-15°C ----- +40°C
Nominal power	W	25	25	Max. permissible winding temperature	°C	120
No load speed	rpm	5800	5600	Max. permissible speed	rpm	15000
No load current	mA	50	50	Axial play at axial load < 3,5 N	mm	0,06
Nominal speed	rpm	4200	4200	Axial play at axial load > 3,5 N	mm	0,06
Nominal torque (max. continuous torque)	mNm	67	67	Radial play	mm@g	0.02@450
Nominal current (max. continuous current)	A	3,2	6,5	Max. axial load (dynamic)	N	4,4
Stall torque	mNm	210	240	Max. force for press fits (static)	N	4,4
Max. Efficiency	%	65	72	Max. force for press fits (static, shaft supported)	N	4,4
Terminal resistance phase to phase	Ω	0,48	1,6	Max. radial loading, 10 mm from flange	N	4
Terminal inductance phase to phase	mH	0,44	1,94	Number of pole pairs		8
Torque constant	mNm / A	19,73	38,5	Number of phases		3
Rotor inertia	gcm ²	48	48	Weight of motor	g	400

APPEARANCE SIZE



BR4285 BRUSHLESS DC MOTOR

Transmotec brushless dc motors covers a large range of miniature sized motors to heavy duty models. The designs include both round and square shaped motor bodies. All motors include hall-effect sensors for phase shift commutation. Standard motors are kept in stock for quick delivery and customized motors are offered upon request. Customizations and configurations are typically different windings, cable and connections, shaft outputs, assembly to gear heads and encoders etc. Additional motor data is available from our web site data base as well as CAD drawings. For further information and requests, you are welcome to contact our professional sales and engineering staff.

FEATURES

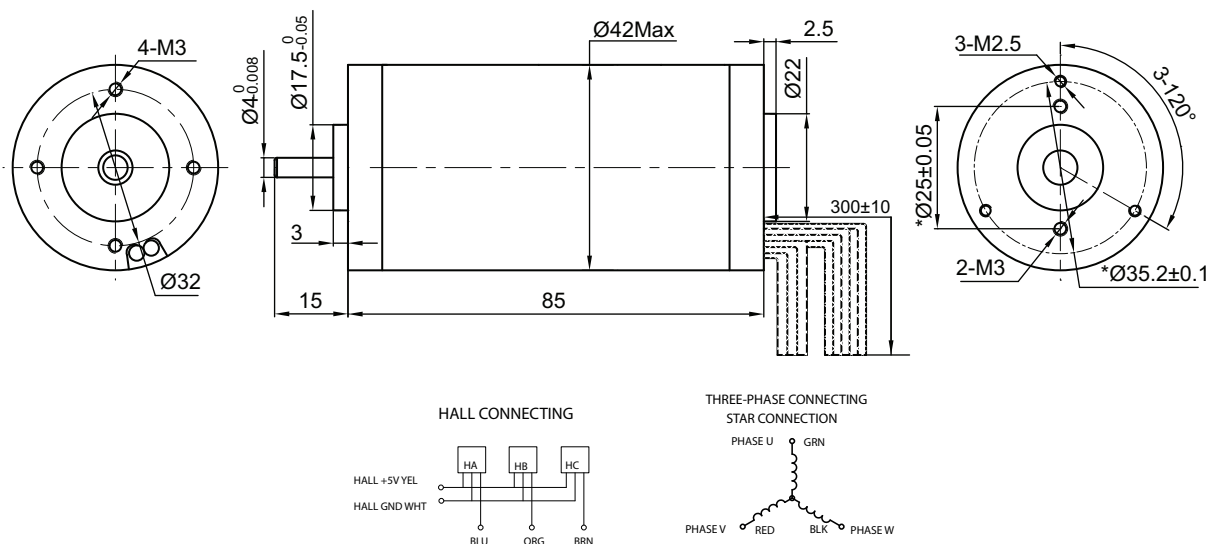
- Large range of miniature motors to heavy duty models
- Round and square shaped motor bodies
- Integral hall-effect sensors
- Quick delivery from stock
- Customisations are welcome



BRUSHLESS MOTOR DATA

	Units	BR4285-24		Units	BR4285
Nominal voltage	V	24	Ambient temperature	°C	-15°C ----- +40°C
Nominal power	W	62	Max. permissible winding temperature	°C	120
No load speed	rpm	6000	Max. permissible speed	rpm	15000
No load current	mA	65	Axial play at axial load < 3,5 N	mm	0,06
Nominal speed	rpm	4000	Axial play at axial load > 3,5 N	mm	0,06
Nominal torque (max. continuous torque)	mNm	180	Radial play	mm@g	0.02@450
Nominal current (max. continuous current)	A	12	Max. axial load (dynamic)	N	4,4
Stall torque	mNm	450	Max. force for press fits (static)	N	4,4
Max. Efficiency	%	73	Max. force for press fits (static, shaft supported)	N	4,4
Terminal resistance phase to phase	Ω	0,71	Max. radial loading, 10 mm from flange	N	4
Terminal inductance phase to phase	mH	0,86	Number of pole pairs		8
Torque constant	mNm / A	38,6	Number of phases		3
Rotor inertia	gcm ²	84	Weight of motor	g	700

APPEARANCE SIZE



BR4293 BRUSHLESS DC MOTOR

Transmotec brushless dc motors covers a large range of miniature sized motors to heavy duty models. The designs include both round and square shaped motor bodies. All motors include hall-effect sensors for phase shift commutation. Standard motors are kept in stock for quick delivery and customized motors are offered upon request. Customizations and configurations are typically different windings, cable and connections, shaft outputs, assembly to gear heads and encoders etc. Additional motor data is available from our web site data base as well as CAD drawings. For further information and requests, you are welcome to contact our professional sales and engineering staff.

FEATURES

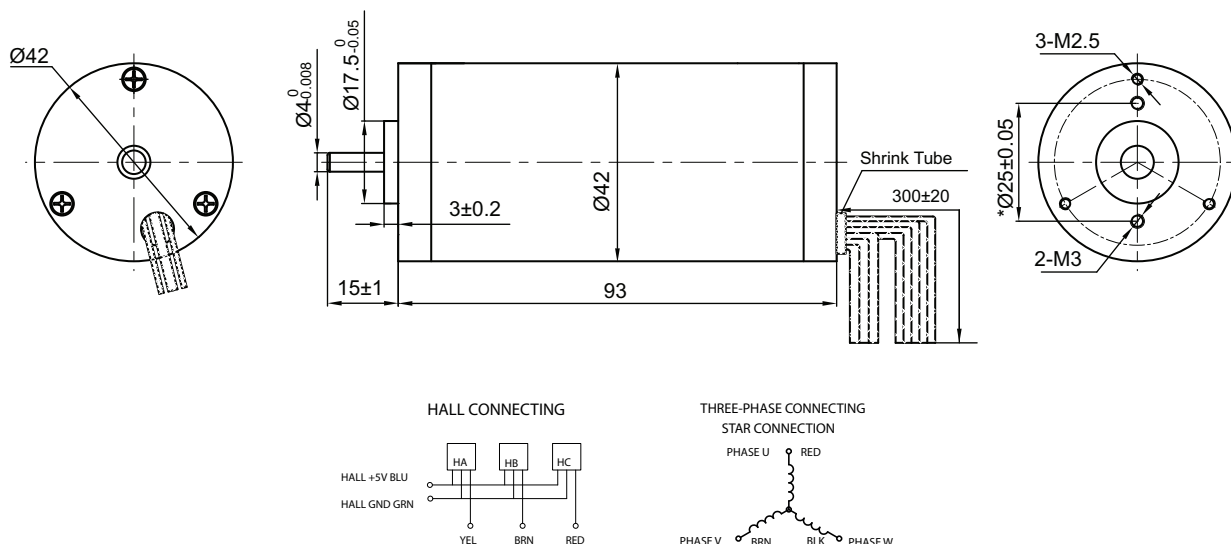
- Large range of miniature motors to heavy duty models
- Round and square shaped motor bodies
- Integral hall-effect sensors
- Quick delivery from stock
- Customisations are welcome



BRUSHLESS MOTOR DATA

	Units	BR4293-24		Units	BR4293
Nominal voltage	V	24	Ambient temperature	°C	-15°C ----- +40°C
Nominal power	W	75	Max. permissible winding temperature	°C	120
No load speed	rpm	8000	Max. permissible speed	rpm	15000
No load current	mA	85	Axial play at axial load < 3,5 N	mm	0,06
Nominal speed	rpm	6300	Axial play at axial load > 3,5 N	mm	0,06
Nominal torque (max. continuous torque)	mNm	138	Radial play	mm@g	0.02@450
Nominal current (max. continuous current)	A	20	Max. axial load (dynamic)	N	4,4
Stall torque	mNm	500	Max. force for press fits (static)	N	4,4
Max. Efficiency	%	75	Max. force for press fits (static, shaft supported)	N	4,4
Terminal resistance phase to phase	Ω	0,325	Max. radial loading, 10 mm from flange	N	4
Terminal inductance phase to phase	mH	0,36	Number of pole pairs		8
Torque constant	mNm / A	28,7	Number of phases		3
Rotor inertia	gcm ²	94	Weight of motor	g	800

APPEARANCE SIZE



BR5743 BRUSHLESS DC MOTOR

Transmotec brushless dc motors covers a large range of miniature sized motors to heavy duty models. The designs include both round and square shaped motor bodies. All motors include hall-effect sensors for phase shift commutation. Standard motors are kept in stock for quick delivery and customized motors are offered upon request. Customizations and configurations are typically different windings, cable and connections, shaft outputs, assembly to gear heads and encoders etc. Additional motor data is available from our web site data base as well as CAD drawings. For further information and requests, you are welcome to contact our professional sales and engineering staff.

FEATURES

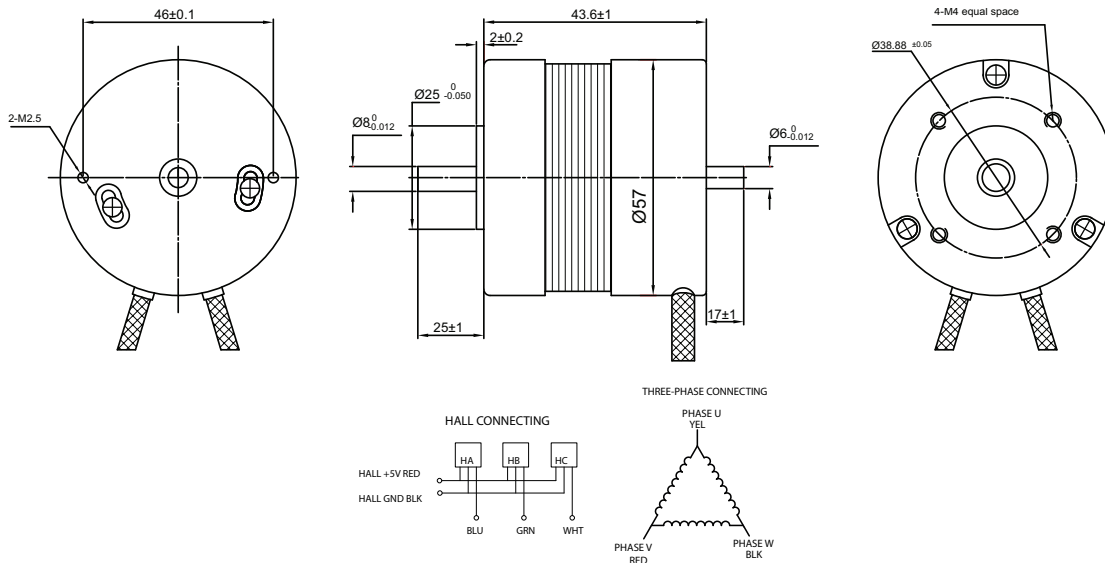
- Large range of miniature motors to heavy duty models
- Round and square shaped motor bodies
- Integral hall-effect sensors
- Quick delivery from stock
- Customisations are welcome



BRUSHLESS MOTOR DATA

	Units	BR5743-12	BR5743-24		Units	BR5743
Nominal voltage	V	12	24	Ambient temperature	°C	-15°C ----- +40°C
Nominal power	W	22	23	Max. permissible winding temperature	°C	130
No load speed	rpm	5800	5900	Max. permissible speed	rpm	13000
No load current	mA	600	400	Radial play	mm@g	0.025@460
Nominal speed	rpm	4000	4000	Max. axial load (dynamic)	N	15
Nominal torque (max. continuous torque)	mNm	55	55	Max. radial loading, 10 mm from flange	N	75
Nominal current (max. continuous current)	A	3.27	1.92	Number of pole pairs		2
Stall torque	mNm	165	165	Number of phases		3
Max. Efficiency	%	60	49	Weight of motor	g	250
Terminal resistance phase to phase	Ω	0.56	2.06			
Terminal inductance phase to phase	mH	1.09	4.1			
Torque constant	mNm / A	18	35			
Rotor inertia	gcm ²	30	30			

APPEARANCE SIZE



BR5753 BRUSHLESS DC MOTOR

Transmotec brushless dc motors covers a large range of miniature sized motors to heavy duty models. The designs include both round and square shaped motor bodies. All motors include hall-effect sensors for phase shift commutation. Standard motors are kept in stock for quick delivery and customized motors are offered upon request. Customizations and configurations are typically different windings, cable and connections, shaft outputs, assembly to gear heads and encoders etc. Additional motor data is available from our web site data base as well as CAD drawings. For further information and requests, you are welcome to contact our professional sales and engineering staff.

FEATURES

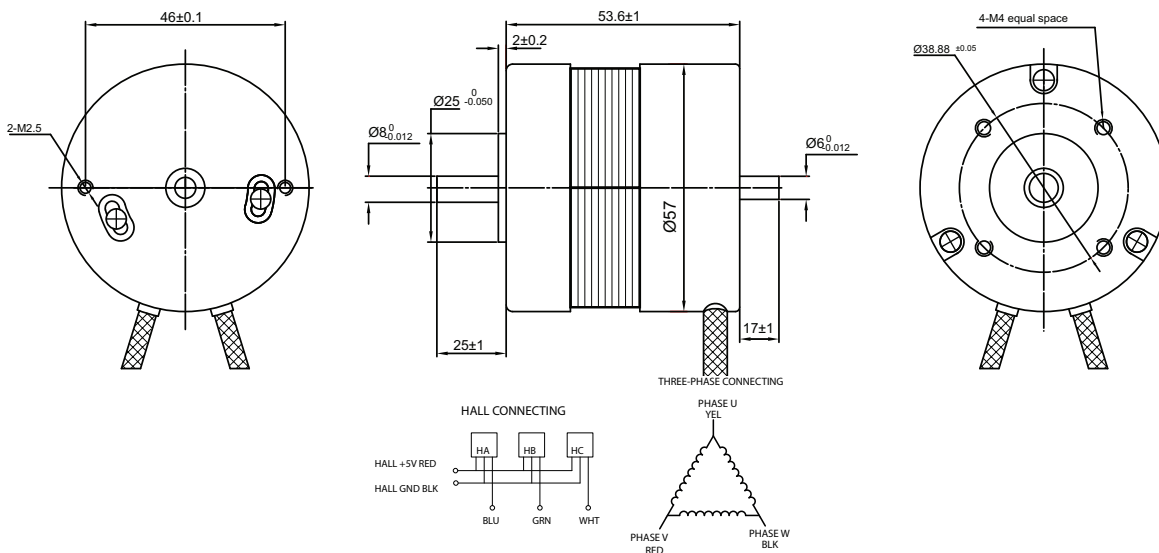
- Large range of miniature motors to heavy duty models
- Round and square shaped motor bodies
- Integral hall-effect sensors
- Quick delivery from stock
- Customisations are welcome



BRUSHLESS MOTOR DATA

	Units	BR5753-12	BR5753-24		Units	BR5753
Nominal voltage	V	12	24	Ambient temperature	°C	-15°C ----- +40°C
Nominal power	W	39	41	Max. permissible winding temperature	°C	120
No load speed	rpm	5600	5400	Max. permissible speed	rpm	13000
No load current	mA	600	500	Radial play	mm@g	0.025@460
Nominal speed	rpm	4000	4000	Max. axial load (dynamic)	N	15
Nominal torque (max. continuous torque)	mNm	100	110	Max. radial loading, 10 mm from flange	N	75
Nominal current (max. continuous current)	A	7.2	2.17	Number of pole pairs		2
Stall torque	mNm	300	330	Number of phases		3
Max. Efficiency	%	53	75	Weight of motor	g	500
Terminal resistance phase to phase	Ω	0.23	0.82			
Terminal inductance phase to phase	mH	0.45	2.3			
Torque constant	mNm / A	14	38.7			
Rotor inertia	gcm ²	75	75			

APPEARANCE SIZE



BR5773 BRUSHLESS DC MOTOR

Transmotec brushless dc motors covers a large range of miniature sized motors to heavy duty models. The designs include both round and square shaped motor bodies. All motors include hall-effect sensors for phase shift commutation. Standard motors are kept in stock for quick delivery and customized motors are offered upon request. Customizations and configurations are typically different windings, cable and connections, shaft outputs, assembly to gear heads and encoders etc. Additional motor data is available from our web site data base as well as CAD drawings. For further information and requests, you are welcome to contact our professional sales and engineering staff.

FEATURES

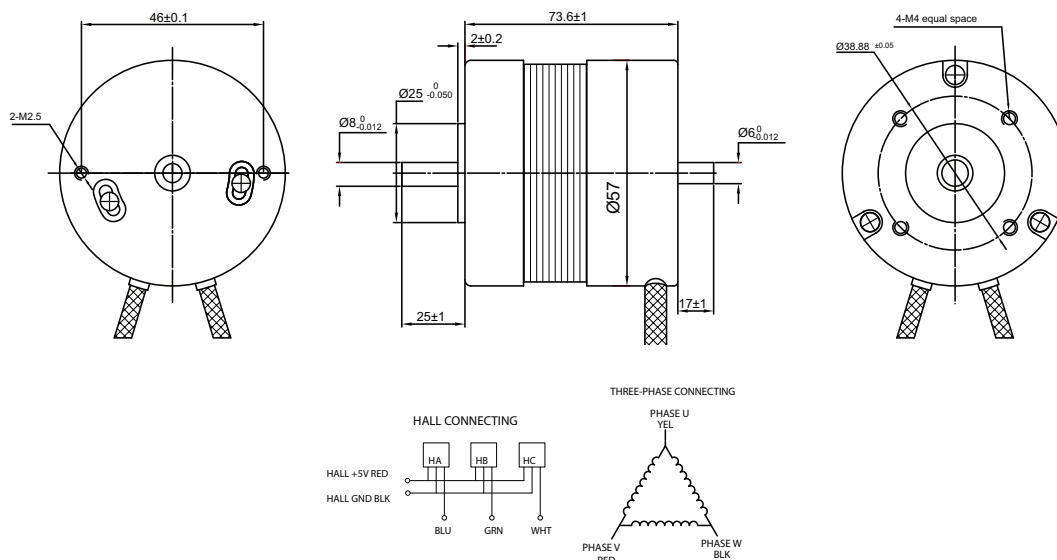
- Large range of miniature motors to heavy duty models
- Round and square shaped motor bodies
- Integral hall-effect sensors
- Quick delivery from stock
- Customisations are welcome



BRUSHLESS MOTOR DATA

	Units	BR5773-12	BR5773-24		Units	BR5773
Nominal voltage	V	12	24	Ambient temperature	°C	-15°C ----- +40°C
Nominal power	W	94	81	Max. permissible winding temperature	°C	130
No load speed	rpm	6100	5300	Max. permissible speed	rpm	13000
No load current	mA	1200	550	Radial play	mm@g	0.025@460
Nominal speed	rpm	4000	4000	Max. axial load (dynamic)	N	15
Nominal torque (max. continuous torque)	mNm	220	220	Max. radial loading, 10 mm from flange	N	75
Nominal current (max. continuous current)	A	12.43	3.67	Number of pole pairs		2
Stall torque	mNm	660	660	Number of phases		3
Max. Efficiency	%	70	75	Weight of motor	g	750
Terminal resistance phase to phase	Ω	0.085	0.35			
Terminal inductance phase to phase	mH	0.2	1			
Torque constant	mNm / A	19.4	43			
Rotor inertia	gcm ²	119	119			

APPEARANCE SIZE



BR5793 BRUSHLESS DC MOTOR

Transmotec brushless dc motors covers a large range of miniature sized motors to heavy duty models. The designs include both round and square shaped motor bodies. All motors include hall-effect sensors for phase shift commutation. Standard motors are kept in stock for quick delivery and customized motors are offered upon request. Customizations and configurations are typically different windings, cable and connections, shaft outputs, assembly to gear heads and encoders etc. Additional motor data is available from our web site data base as well as CAD drawings. For further information and requests, you are welcome to contact our professional sales and engineering staff.

FEATURES

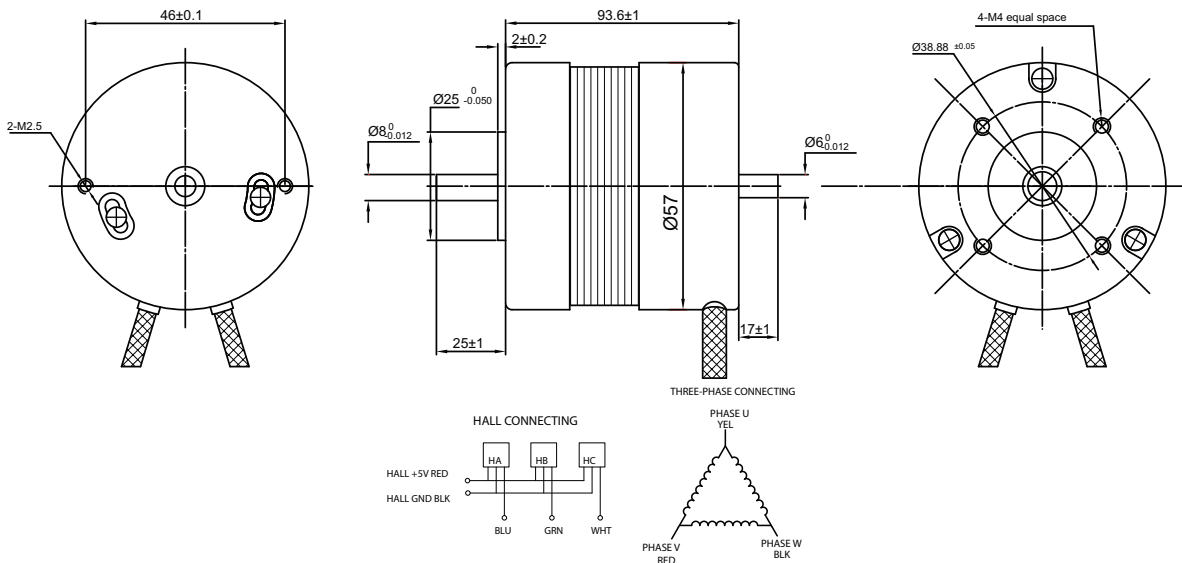
- Large range of miniature motors to heavy duty models
- Round and square shaped motor bodies
- Integral hall-effect sensors
- Quick delivery from stock
- Customisations are welcome



BRUSHLESS MOTOR DATA

	Units	BR5793-12	BR5793-24		Units	BR5793
Nominal voltage	V	12	24	Ambient temperature	°C	-15°C ----- +40°C
Nominal power	W	127	120	Max. permissible winding temperature	°C	130
No load speed	rpm	5500	5200	Max. permissible speed	rpm	13000
No load current	mA	1200	700	Radial play	mm@g	0.025@460
Nominal speed	rpm	4000	4000	Max. axial load (dynamic)	N	15
Nominal torque (max. continuous torque)	mNm	330	330	Max. radial loading, 10 mm from flange	N	75
Nominal current (max. continuous current)	A	19	8.43	Number of pole pairs		2
Stall torque	mNm	990	990	Number of phases		3
Max. Efficiency	%	60	70	Weight of motor	g	1000
Terminal resistance phase to phase	Ω	0.064	0.19			
Terminal inductance phase to phase	mH	0.15	0.61			
Torque constant	mNm / A	24	39.7			
Rotor inertia	gcm ²	173	173			

APPEARANCE SIZE



BR57115 BRUSHLESS DC MOTOR

Transmotec brushless dc motors covers a large range of miniature sized motors to heavy duty models. The designs include both round and square shaped motor bodies. All motors include hall-effect sensors for phase shift commutation. Standard motors are kept in stock for quick delivery and customized motors are offered upon request. Customizations and configurations are typically different windings, cable and connections, shaft outputs, assembly to gear heads and encoders etc. Additional motor data is available from our web site data base as well as CAD drawings. For further information and requests, you are welcome to contact our professional sales and engineering staff.

FEATURES

- Large range of miniature motors to heavy duty models
- Round and square shaped motor bodies
- Integral hall-effect sensors
- Quick delivery from stock
- Customisations are welcome



BRUSHLESS MOTOR DATA

	Units	BR57115-24		Units	BR57115
Nominal voltage	V	24	Ambient temperature	°C	-15°C ----- +40°C
Nominal power	W	172	Max. permissible winding temperature	°C	130
No load speed	rpm	5600	Max. permissible speed	rpm	10000
No load current	mA	400	Radial play	mm@g	0.025@460
Nominal speed	rpm	4000	Max. axial load (dynamic)	N	15
Nominal torque (max. continuous torque)	mNm	440	Max. radial loading, 10 mm from flange	N	75
Nominal current (max. continuous current)	A	11	Number of pole pairs		2
Stall torque	mNm	1320	Number of phases		3
Max. Efficiency	%	70	Weight of motor	g	1250
Terminal resistance phase to phase	Ω	0.16			
Terminal inductance phase to phase	mH	0.44			
Torque constant	mNm / A	39			
Rotor inertia	gcm ²	230			

APPEARANCE SIZE

